

In This Issue

President's Message	2
Membership News	2
Lang Match Challenge Update	2
Dollars for Scholars Kickoff	3
Leading the Way	3
Writing Your Annual Scholarship Gift Checks	3
Five Fast Facts	3
In Her Own Words	4
Board Notes	5
RCC Seeking Reviewers	5
Support Dunn House	5
Public Policy	5
Remembering John Darling	6
Black History Month Reading	6
Oregon News	6
Interest Groups	7
What We're Reading in February	7
January Branch Meeting	8
December 2020 Holiday Party	9

Looking Ahead

March Branch Meeting	Mar 27
April Presidents' Meeting	Apr 24

Mission: To advance gender equity for women and girls through research, education, and advocacy.

Vision: Equity for all.

Values: Nonpartisan.
Fact-based. Integrity.
Inclusion and Intersectionality.

February Branch Meeting Diversity, Inclusion, and Title IX at SOU

Colleges and universities have spent several years facing increased scrutiny of their Title IX policies, shaped by governmental policy that has rescinded numerous protections for students, including claims of sexual harassment. The new federal administration may reverse those policy decisions.

Conducting effective Title IX investigations requires ongoing education and training to include navigating campus policies and creating a solid record of factual documentation. Title IX also involves equal access for women, especially those leading to high-earning careers.

Join a panel of distinguished SOU representatives including Linda Schott, President, Susan Walsh, Provost and Vice President for Academic Affairs, and Angela Fleischer, Director of Equity Grievance, as they discuss the challenges of conducting Title IX investigations into sexual harassment and other initiatives related to Title IX compliance that SOU has championed.

This promises to be an enlightening and engaging program as we learn how SOU is facing challenges associated with current Title IX compliance guidelines.

When: Saturday, February 27, 10:30 am- noon

Where: Online with Zoom, link sent by all-member email

February 27
Diversity, Inclusion & Title IX at SOU

Presenters: SOU Panel

March 27
Women Living Leadership

Presenters:
Dee Anne Everson,
Executive Director, United
Way of Jackson County

April 24
Presidents' Meeting

Presenters: Paula Wiiken
and Catherine Lutes,
Co-presidents

May TBD
Upscale Sale

Bellview Grange
Coordinated by the AAUW
Ashland Fundraising
Committee

May TBD
Celebration of Scholars

Presenters: Celebration of
Scholars Committee



Dr. Linda Schott
President of Southern
Oregon University.
She is beginning her
fifth year as president of
Southern Oregon University



Dr. Susan Walsh
Provost and Vice
President for Academic
Affairs and Professor
of Communication at
Southern Oregon University



Ms. Angela Fleischer
Director of Equity Grievance
/Title IX Coordinator at
Southern Oregon University



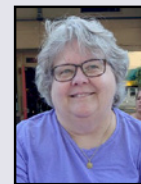
Announcing the Dollars for Scholars Campaign!

The Dollars for Scholars Campaign for annual scholarships will run from February 1 to April 1, 2021 with a goal \$10k in scholarship monies to be raised and awarded this year to deserving women students at the Southern Oregon University (SOU) and at Rogue Community College (RCC).

READ ALL ABOUT IT ON PAGE 3.

Women Living Leadership

Dee Ann Everson will be our featured speaker at the March Branch meeting. Join us as we explore ways we can use our power to improve the lives of women and children in our community.



Dee Anne Everson is the CEO/Executive Director of United Way of Jackson County since 1997. Under her leadership, United Way launched many initiatives that have bettered our County.

When: Saturday, March 27
10:30 am – noon

Where: Online with Zoom

PRESIDENT'S MESSAGE



Some Things We Learned in 2020

This has been a year like no other we've known. The pandemic, rise in racial tensions, an extremely contentious election, and the recent events at the U.S. Capitol, and here in the Rogue Valley the Alameda Fire, have disrupted our daily lives, created new challenges, and caused us to question long-held beliefs.

The losses, pain, suffering, and anxiety we have all endured are well documented. Millions of people have lost their jobs, and in December alone, 140,000 jobs were lost - ALL BY WOMEN! (Annalyn Kurtz, CNN Business, January 8, 2021)

Staying at home has taken a toll on our mental and emotional health, especially to many seniors, due to increasing isolation and loneliness. But we have found that we are remarkably resilient in adapting to this new "normal."

Technology has kept us in touch with people, and accelerated emerging trends: telemedicine, remote working, distance learning, banking, shopping, and getting prescriptions filled, to name a few. According to a recent article in the Mail Tribune, the pandemic, along with the challenges of the wildfire season, have also strengthened the local healthcare system to better handle respiratory-borne illness in the future!

Social distancing has brought us, in some unexpected ways, closer together. By not being able to come together with our friends and family, we are realizing how important those relationships are to us. Reconnecting with friends and family will be a priority for many of us once the pandemic is over.

This past year has given us time to pause and think about what is important in life, and ask ourselves when the pandemic is over and our lives return to routine: What will we make of this fresh start? And what can/ will we do to help those who were not as fortunate?

With each ending comes a new beginning . . .

—Catherine Lutes

MEMBERSHIP NEWS



February Birthdays

Priscilla Arnold	2/17
Erin Finklea	2/19
Elizabeth Zinser	2/20

Our Branch continues to grow in membership in spite of the limitations of our "on-line only" presence. Thanks to our new website, potential members have been able to contact us about membership. As a result, 2 new members have joined since the last newsletter, bringing our total membership to 153. New members who join in '21 will receive membership through June, 2022.

2020 New Member Bios:

Cathe Ledford is a registered nurse, graduating from CSU, Long Beach. She taught nursing at Shasta College and Simpson University in Redding, California. Cathe has been a member of AAUW, Redding Branch for 28 years, where she served as Newsletter Editor, Recording Secretary, Treasurer, Co-Chair of Round Robin Book section, Membership VP, and Legal Advocacy Fund Rep. She was an active member of the book and drama sections as well as a member of the STEM conference planning committee. She looks forward to being an active member of the Ashland AAUW.

Lisa Verner, FAICP, is an urban planner who has retired after a 44-year career. Lisa served as the King County, WA, permitting department's legislative coordinator and worked with the County Executive and County Council. Her professional experience included public planning, land use consultant, corporate real estate, and non-profit work. Lisa has led the American Planning Association Washington State chapter as both president and vice president. She enjoys traveling to Italy and Great Britain and obtained her Irish passport just as the coronavirus pandemic took off. Lisa moved to Ashland on a big adventure and because her great-grandparents had a pear orchard in Central Point in the late 19th Century.

In Our Thoughts

A sympathy card was sent to Alice Mallory who lost her sister to cancer.



Lang Match Challenge Completed!

We are very pleased to announce the Lang Match goal of \$50,000 has been completed a full year ahead of schedule, thanks to the generosity of our members and additional donors.

What an accomplishment!

Katharine and Ron Lang set up the Lang Match Challenge in January of 2020 to encourage and promote increasing the balances in the SOU and RCC Endowment Funds.

The donation that put us over the top was from Katharine and Ron who made a large \$14,000 cash donation to SOU and RCC Annual and Endowment Funds. The portion counted toward the match is \$3,500 to the SOU Endowment Fund and \$3,500 to the RCC Endowment Fund.

Their \$50,000 check will be distributed to SOU and RCC endowment funds.

- SOU to receive \$17,000 from the Lang Match (34% of \$50,000)
- RCC to receive \$33,000 from the Lang Match (66% of \$50,000)

We want to express our deep appreciation to Katharine and Ron for creating this special challenge match last year. Their generosity has significantly increased the impact our endowment funds will have on education.

And, a heartfelt thank you to all of our members and other donors from our community.

Your support means our Branch can continue awarding scholarships to female students attending SOU and RCC for many years to come.

—Endowment Committee

Dollars for Scholars

Annual Scholarship Fundraising Campaign Kickoff



\$2750

We are excited to announce the kickoff of our 2021 Dollars for Scholars campaign for annual scholarships. This year's Campaign marks the 31st year that the Ashland Branch has been helping women in this valley realize their educational dreams.

Our Branch members share a deep commitment to supporting women's education in the Rogue Valley. The scholarships that we have been awarding for the past 30 years have helped countless women realize their dreams of becoming educated and self-sufficient.

And, now in the midst of this terrible pandemic, it is women who are most often in the greatest need of help and support. Women who are trying to support their families, trying to better themselves and better the lives of their families through education.

Now, more than ever, our support of these women is vitally needed.

That's why the 2021 Dollars for Scholars Campaign is so important. This year, we are aiming high, given the increased need. We have

set a \$10,000 goal to be raised in two months. The Dollars for Scholars Campaign will run from February 1 to April 1 with a goal \$10k in scholarship monies to be raised and awarded this year to deserving women students at the Southern Oregon University (SOU) and at Rogue Community College (RCC).

Won't you join us?

Every dollar counts. Every gift counts, whether it is \$20 or \$200 or \$2000. In addition to our dollar goal, we also have a 100% participation goal. We invite each and every one of you to be a part of this effort. Whatever level you choose to give, you will feel good knowing that you have been a part of something bigger. Together we can make a significant difference in the lives of local women.

Ready to write your check? See the Check writing instructions on this page and do it today. It's easy.

Thank you for your commitment to the mission of AAUW, to support education for women.

FUNDRAISING GOAL:
\$10,000
BY APRIL 1, 2021

Writing Your Annual Scholarship Gift Checks

When considering your gift or gifts to the 2021 Dollars for Scholars Campaign, you will need to decide if you want to give for scholarships at Southern Oregon University (SOU) or at Rogue Community College (RCC), or both.

How you write your check determines which school(s) receives your money.

Want to give to educating women at SOU?

Write the check to "SOU Foundation" and write "AAUW Annual" on the memo line.



Want to give to educating women at RCC?

Write the check to "RCC Foundation" and write "AAUW Annual" on the memo line.



Want to split your gift between the two schools?

Write two checks, one to each school as described above.

Writing "AAUW ANNUAL" on the memo line is very important and ensures that your gift goes to the Dollars for Scholars annual scholarship campaign.

Mail contributions to:
AAUW Ashland
2305 Ashland St. Suite 406
Ashland, OR 97520

Your gift to promote the education of women is so important. Thank you!

—Sylvie Whitman
Annual Scholarship Fundraising Chair

Five Fast Facts About AAUW Ashland Scholarships

1 YOU make it happen!

It is you, our AAUW Ashland Branch members, that fund our scholarships! Together we work to enable our sisters to get an education and make a difference in their own lives, the lives of their families, and to the community.

2 AAUW Ashland awards scholarships

to women at Southern Oregon University (SOU) at undergraduate and graduate levels, and Rogue Community College (RCC) women who are from diverse undergraduate majors and pre-professional programs.

3 Our partners are SOU and RCC.

With the help of each financial aid office, applicants are matched with funds for which they qualify. Each quarter the accounting office applies one third of the scholarship award to the student's account to cover any university expenses like tuition, on-campus housing, fees and books. No checks are issued directly to students.

4 Our wonderful AAUW Ashland Scholarship Committee

headed up by Wanda Chin and Kate Wolf-Pizzor, reviews the applications, interviews and evaluates each candidate and then selects a slate of finalists. The awards are made, the finalists notified, and the following fall, the initial funds are distributed. In the spring, our Branch celebrates our scholars with a special event.

5 No gift is too small.

Every dollar gifted is a dollar in support of education and women. Thank you!

Leading the Way

Branch Board pledges 100% support of Dollars for Scholars

One hundred percent of the Branch Board, all thirteen members, showed their support and commitment to raising funds for annual scholarships this year by pledging gifts to the Dollars for Scholars campaign which will kick off on February 1. The total amount of Board pledged gifts is \$2750.

"Scholarships are critical to advancing higher education opportunities for women. Our Board fully supports and endorses Branch efforts to fulfill this vital part of our mission."

—Paula Wiiken and Catherine Lutes, Branch Co-Presidents

8.44%



BRANCH PARTICIPATION GOAL: 100%
BY APRIL 1, 2021

Hand To Hand—Begin to Be The Change

By Tina Springer

SOU McNair Scholar, Interdisciplinary Studies Major (Psychology, Biology, & Health); Minor in Native American Studies; AAUW Ashland Wolf-Pizor Family Scholar

Well, I have to say that 2020 has been quite the year.

A few days prior to the fires that devastated the Rogue Valley, I had just moved into a new home with my two teen daughters. Our friends, families, and associates were suddenly, hopelessly affected, in shock, and afraid.

As the disaster relief shelters swiftly formed in the wake of the fires, I threw myself into volunteering to help in any way I could, along with my kids. I found through this work an unanticipated need, so I started personal shopping for friends and community members who were too overwhelmed to do so on their own.

Fall term was a success, and I was happy to make the Provost's list, even as it was a full schedule with online classes for both myself and my daughters. I began research for publication with my McNair mentor, Douglas Smith, Ph.D., professor for the Master's program in Counseling at SOU, and Michael Furlong, Ph.D. from UCSB on a review of literature discussing the topics of boredom and youth engagement in schools. This work should culminate this spring.

Inspired by humanitarian aid relief work, I had the opportunity to include a brand new Humane Leadership course, led by Stephen Sloan. Under the wings of the mentorship of Ellie Holty, I was able to secure an administrative internship through Local Innovation

Works, a business startup incubator, and Mi Valle Mi Hogar / My Valley My Home, a new nonprofit organization. Both are dedicated to improving livability, housing, and jobs for people of the Rogue Valley.

The culmination of the internship and classwork was, for me, a compiled list of funding opportunities, grantors, donors, and interest groups to help establish a database of potential sources to assist those affected by the wildfires, and for the continuation of the internships. This project involved many hours of research and database compilation and a public presentation to the community and potential funders on Zoom. Along with a group of 11 other interns (with their own projects and mentors) an enormous effort to collaborate with other organizations to address more permanent housing solutions, job resiliency, and community rebuilding is well underway.

I was thrilled to be able to include the class and internship, along with a class in social equity, as part of a brand new, three-part micro-credential badge, offered this year through SOU. This term, I also added Biology and a Native American Studies minor to my Interdisciplinary degree.

What a start to the school year for my two daughters, and the final year of my undergraduate studies at SOU! What a place to begin to be the change, as we embark on the journey to rebuild the Rogue Valley, brick by brick, and hand in hand. I am looking forward to my future, with graduate school in mind and a hopeful heart.

Many thanks to AAUW and your generous donors, who have given me a leg up to success and a brighter future! Without you, I would not be here in this capacity, working to make a positive impact in the world!



Tina Springer spent time organizing her family in their new student family housing, and relaxing with her labradoodle, Suki and cat, Momo.



(Left, clockwise to right) Tina, at a birthday coffee to-go with her daughters Maya, Saphyre, and Ele, Saphyre's best friend. I will graduate in June of 2021. My older daughter will be a graduating senior from Ashland High School, and my youngest daughter from John Muir Outdoor School eighth grade, so it will be a special spring for all of us, indeed!

PS. Passing on Traditions

Kate and I often laugh about our own family's southern roots, hers in West Virginia and mine from southern China's Pearl River Delta. Viewing the recent insurrection at the nation's Capitol and being familiar with violent historic events makes us each aware of what a difference a university education can make in women's lives.

Kate and her husband, Jim, were able to meet Tina Springer, the second student awarded the Wolf-Pizor Family Scholarship. Kate was following in her mother's tradition of contributing to scholarships for women. Kate went on to describe Tina and her attributes that forward our AAUW Ashland scholarship characteristics.

"Tina is enthusiastic, dedicated, ambitious, and determined to do as much possible to both get and give. She is eager and determined to make a contribution and make a difference. Her contribution will be palpable and profound. She won't give up or in. She wants a better world for us all."

Tina shared some thoughts about meeting Kate and learning about her AAUW Ashland's namesake scholarship.

"Kate has been an inspiration to me, with her dedication to policy and lobbying to make family therapy visible and billable on a national level in the psychology field. I was so impressed by her dedication to expanding the important concept of therapy to include not only individuals, but the healing of families. Her amazing library of signed books and love of literacy shows that she continues to learn and grow each day."

Our AAUW Ashland scholarship legacy is not just the financial support for the scholar's year in university education. The sisterhood, practice, and energy of women empowering women connects us across families and inspires us to pass on these traditions through generations.

We thank you for supporting AAUW Ashland's scholarships! We are grateful that Sylvie Whitman is heading scholarship fundraising for this year.

—Kate Wolf-Pizor and Wanda Chin,
Scholarship Co-chairs



November 23, 2020

Succession/Nomination Policy

- A succession/nomination policy to assure smooth change for the Branch was developed in connection with our 5 Star award application. The policy was presented to and approved by the Board. It will be noted on the Strategic Plan and posted on the Branch website.
- A five-member nominating committee will be established pursuant to the succession plan with the chair appointed by the Board.

SOU Foundation

- The SOU Foundation has provided an annual account summary for our endowment and scholarship funds. It is being reviewed by the Endowment Committee and by Paula Wiiken and Ellen Fowler on behalf of the Board.

Special Projects

- Information regarding special projects that have historically been supported by our members will be included in future issues of the newsletter, including general education, contact information, and, if desired, how to make direct donations.
- Vicky Giffin will submit an article highlighting The Maslow Project for the next newsletter.

—Peggy Audibert, Recording Secretary

Seeking Scholarship Reviewers at RCC

Rogue Community College (RCC) is seeking volunteers to review and score student scholarship applications online, from home during the March 5-15 window. This is a 3-5 hr commitment. Directions/training provided in late February. To sign up, complete this online [Conflict of Interest form](#) ASAP. For questions, contact Anna Manley, Scholarship Coordinator with the RCC Foundation at 541-956-7293 or amanley@rogucc.edu.

Dunn House Needs Your Support

Every winter for a number of years Ashland AAUW has organized a project in support of Dunn House, the only domestic violence shelter in Jackson County. Examples of contributions from our Branch have included a refrigerator, washers and dryers, new linens, and kitchen utensils and appliances. Other contributions have included hundreds of bus tokens and a library of fiction and nonfiction titles.

Dunn House supports and empowers anyone impacted by domestic violence, sexual violence, stalking, and sex trafficking. All services are free and confidential and all services are available in Spanish. Residents flee violence frequently with only the clothes on their backs. Trained advocates work with families to provide information, referral to community services, and emotional support as well as food, clothing, and personal care items.

Due to the increased domestic violence resulting from the pandemic and the need to house clients off-site in motel rooms for quarantine, the need is even greater this year. Dunn House, which operates under the umbrella of Community Works, a nonprofit tax-exempt organization, depends on community support to operate. Checks can be sent to Community Works, 2594 E Barnett Suite C, Medford 97504 or you can pay by credit card online at www.community-works.org/make-donation/ by indicating Dunn House on the memo line or the online form. We hope our Branch members will continue to support Dunn House this year even though we can't inspire you with an embarrassing skit by your WiN (Women in Need) Team. If you are interested in being a part of the WiN team this year contact Carol or Gretchen.

—Carol Ryan and Gretchen King, WiN

Charitable Partners

These two members have pledged to make a donation to either the AAUW/SOU or AAUW/RCC Scholarship Fund every time an AAUW member uses their services or refers someone who uses their services. We thank them for their generosity and dedication to AAUW.

Liz Murphy, CFP MBA/Financial Advisor
Raymond James Financial Services
541-779-9907
Liz.Murphy@RaymondJames.com
raymondjames.com/lizmurphy

Sara Walker, Broker
Patricia Sprague Real Estate
541-951-5454
sara@hatsoff2u.com
hatsoff2u.com

COVID-19 and Domestic Violence

The pandemic has created the perfect storm for an alarming increase in domestic violence across the country. Isolation is a big risk in intimate partner violence and COVID isolation has been both physical and social. When victims are required to stay home without access to usual outlets that help to reduce tension, time apart when at work, opportunities to visit friends and family, or a private place to reach out for help, the opportunity for violence arises. The perpetrator employs violence as a tool to maintain control and power over the victim. The need for power is, partly, a reflection of the lack of power over the environment. The current isolation brings uncertainty about job and financial security and the concomitant stress contributes to an amplification of violent behavior. An increase in alcohol consumption exacerbates the situation. Sadly, the threat looms largest when women should be safest, in their own homes. A study from Portland determined that in that city intimate partner violence increased 22% during 2020. Authorities in D.C. reported an increase in domestic homicides of 60% during 2020. Instead of bruises and cuts, women are arriving at emergency rooms with knife wounds, effects of strangulation, and gunshot wounds. Victims are waiting longer to seek help so the violence escalates.

In addition to supporting our local Domestic Violence Shelter, Dunn House, and Hotline resources at Community Works, there are actions we should take if we are aware of potential intimate partner abuse. First, continue to be a friend, listen, don't judge, and encourage survivors to reach out for help. A useful tactic is for friends or neighbors to select a code word, so if a situation starts to escalate, the DV victim can call a friend or neighbor requesting help. Bystanders can also help anyone experiencing DV by calling the police if they hear or see something suspicious in their neighborhood.

—Gretchen King, Public Policy Team

Remembering John Darling



Ashland lost a good friend on January 6, 2021 when John Darling's battle with cancer ended.

I met John in the summer of 2011 when I asked for his assistance with publicity for our Garden Tour. I soon came to know him as a journalist with his finger on the pulse of our community.

John covered a number of AAUW Ashland's events. He believed in our mission and was a true advocate for the education and advancement of women. John once shared with me his belief that we were a superior species. How can you help but love a man who believes that?

He always attended our Celebration of Scholars, usually featuring one of our scholarship recipient's stories. John's pieces portrayed such an informative overview of what AAUW did both locally and nationally that our visibility substantially increased in the community.

The last time I met with John it was Friday, March 6, 2020 and he was interviewing me for an article on the upcoming Women's March. The next day I told him we were postponing until October. John still wrote an article, but it was now about the cancellation of not only our event but several others due to Covid-19.

After that the world changed.

I will miss John, and I will not be alone. His humor, intelligence, storytelling abilities and gentle and loving presence will be cherished and remembered for a long time in our town.

—Mimi Pippel



February is Black History Month and the perfect time to read (or reread) works by celebrated Black writers. Here are just a few suggestions:

Barack Obama: "A Promised Land"

Michelle Obama: "Becoming"

Isabel Wilkerson: "Caste" and "The Warmth of Other Suns"

Alice Walker: "The Color of Purple"

Trevor Noah: "Born a Crime"

Zora Neale Hurston: "Their Eyes Were Watching God"

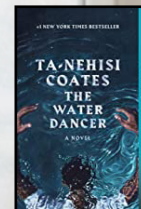
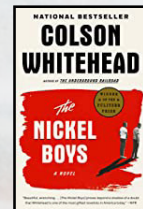
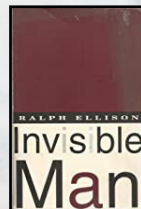
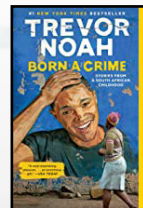
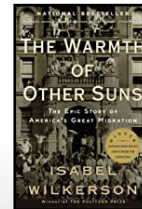
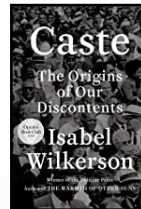
James McBride: "The Color of Water"

Ralph Ellison: "The Invisible Man"

Colson Whitehead: "The Underground Railroad"

Ta-Nehisi Coates: "The Water Dancer"

Yaa Gyasi: "Homegoing"



AAUW OREGON NEWS

AAUW Medford Branch

February Branch Meeting on Zoom
Tuesday, February 4, at 7 pm

Program: "Traveling Judge"—Judge Pat Crain will talk about what she's been doing since retiring from the Jackson County Circuit Court.

March Branch Meeting on Zoom
Saturday, March 6, at 10 am

Program: TBD

April Branch Meeting on Zoom
Thursday, April 1, at 7 pm

Program: Dr. Alan Journet, co-founder of Southern Oregon Climate Change Now (SOCAN), will talk about the current status of the environment.

AAUW Grants Pass Branch

February Branch Meeting on Zoom
Saturday, February 20, at 10 am

Program: TBD

March Branch Meeting on Zoom
Saturday, March 20, at 10 am

Program: "Days for Girls" with Anna Loeffler

AAUW of Oregon Convention

April 2021—stay tuned for info



INTEREST GROUPS

Due to the COVID-19 pandemic, many groups have chosen to suspend meeting for the foreseeable future or are meeting by Zoom or in small groups. Some groups are currently full due to size limitations and are not accepting additional members. For more information, to join, or to check on the current status of the group, contact the individual interest group coordinator by clicking on their name below.

Arts and Language

MOVIE MUSICALS usually meets the 3rd Monday at 4:30 pm. They are currently not meeting. New members welcome. Coordinator: [Diane Novak](#)

OPERA usually meets the 1st Tuesday at 4 pm. They are currently not meeting but are staying in touch via email. New members welcome. Coordinator: [Nancy Kramarenko](#)

PLAY READING usually meets the 4th Friday at 4 pm. They are currently not meeting but are considering how. New members welcome. Coordinator: [Annette Lewis](#)

Book Groups

BRAIN BOOKS usually meets the 4th Tuesday 3-5 pm. They are currently meeting via Zoom. New members welcome. Coordinator: [Sandra Coyner](#)

DAY NONFICTION usually meets the 1st Wednesday at 1 pm. They are currently meeting via Zoom. Full, not accepting additional members. Coordinator: [Linda Lipkind](#)

DAYTIME FICTION usually meets the 3rd Wednesday at 1 pm. They are currently meeting in-person, outside. Full, not accepting additional members. Coordinator: [Colleen Patrick-Riley](#)

NIGHTTIME NARRATIVE NONFICTION usually meets the 3rd Wednesday at 7 pm. They are currently meeting via Zoom. Full, not accepting additional members. Coordinator: [Ellen Fowler](#)

FICTION FANS usually meets the 2nd Monday at 7 pm, currently via Zoom. Full, not accepting additional members. Coordinator: [Shannon Stuver](#)



MYSTERY MAVENS usually meets the 2nd Thursday at 7 pm. They are currently meeting via Zoom. New members welcome. Coordinator: [Esther Stone](#)

Games, Genealogy, Knitting & Dining

BOARD GAMES usually meets the 4th Wednesday at 7 pm. They are currently not meeting. Full, not accepting additional members. Coordinator: [Sylvie Whitman](#)

GENEALOGY GROUP We will not meet in February but will meet on Thursday, March 25, at 1 pm on Zoom. New members of all experience levels welcome. Coordinator: [Linda Lipkind](#)

KNITTERS AND STITCHERS usually meets the 2nd Thursday at 1pm. They are currently meeting in-person. New members welcome. Coordinator: [Peggy Audibert](#)

POTLUCK DINNERS usually meet 4 to 6 times per year, day and time TBD. They are currently not meeting. New members welcome. Coordinator: [Elaine Sweet](#)

Check out our new look!

We've redone the Interest Group page on our Branch website. You'll notice that each of the book clubs now has a live link that leads you to their booklists in case you're looking for great reading suggestions to get you through the winter.

And, we've put in placeholders for what we hope will be some new interest groups forming when we're post-pandemic.... "Outdoor Adventures" and "World View and Big Ideas." Start thinking of what wonderful new groups you might like to see form!

What We're Reading in February

February book selections from the Branch book clubs....

Brain Books — "Injustices: The Supreme Court's History of Comforting the Comfortable and Afflicting the Afflicted" by [Ian Millhiser](#). Very readable stories lay out the history of the Supreme Court after the Civil War and give us a basis for rethinking what we think the Supreme Court is.

Daytime Nonfiction — "Midnight in Chernobyl: The Untold Story of the World's Greatest Nuclear Disaster" by [Adam Higginbotham](#). This is a history of the Chernobyl nuclear disaster that occurred in Soviet Ukraine in 1986. Won the Andrew Carnegie Medal for Excellence in Nonfiction in 2020.

Daytime Fiction — "The Magician's Assistant" by [Anne Patchett](#). Well written and full of interesting twists, Patchett's lush and suspenseful story is a portrait of a woman who goes looking for the answers to a mystery left behind by a dead husband and finds redemption in the finding.

Nighttime Narrative Non-Fiction — "Madame Fourcade's Secret War" by [Lynne Olsen](#). One of the great stories of the French Resistance...a story of one woman's heroic courage amid great danger.

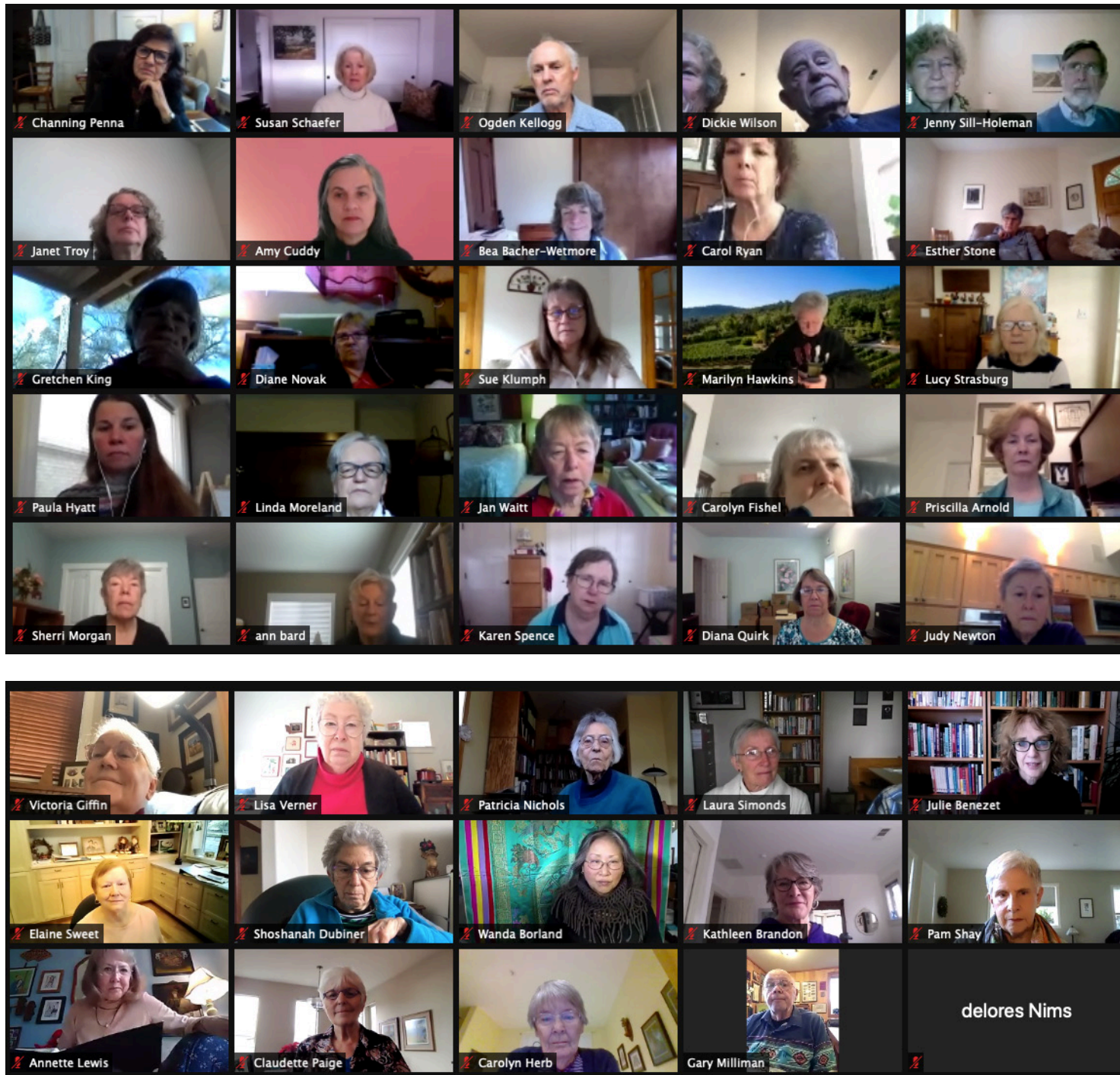
Fiction Fans — "Year of Wonders: A Novel of the Plague" by [Geraldine Brooks](#). An unforgettable tale, set in 17th century England of a village that quarantines itself to arrest spread of the plague... a story of how people are changed by catastrophe.

Mystery Mavens — "The Suspect" by [L.R. Wright](#). A thrilling mystery ride featuring a Canadian Mountie and his librarian love interest! The first in the highly acclaimed series.

Remember that you can always form a new book club if the one you're interested in is closed!



The Fiction Fans book group met on January 11th to discuss *The Color of Lightning* by Paulette Jiles (and to sing 🎵 Happy Birthday 🎵 to Shannon Stuver!)



January Branch Meeting

Ashland's new mayor, Julie Akins, was the speaker at our Zoom Branch meeting on January 23. The over-subscribed Zoom meeting was attended by 100 Branch members and the public. The Mayor fielded questions from Public Policy Co-Chair Regina Ayers on a wide variety of subjects concerning the many issues and challenges facing our city.

If you missed the meeting, you can watch a recording on our website, <https://ashland-or.aauw.net>



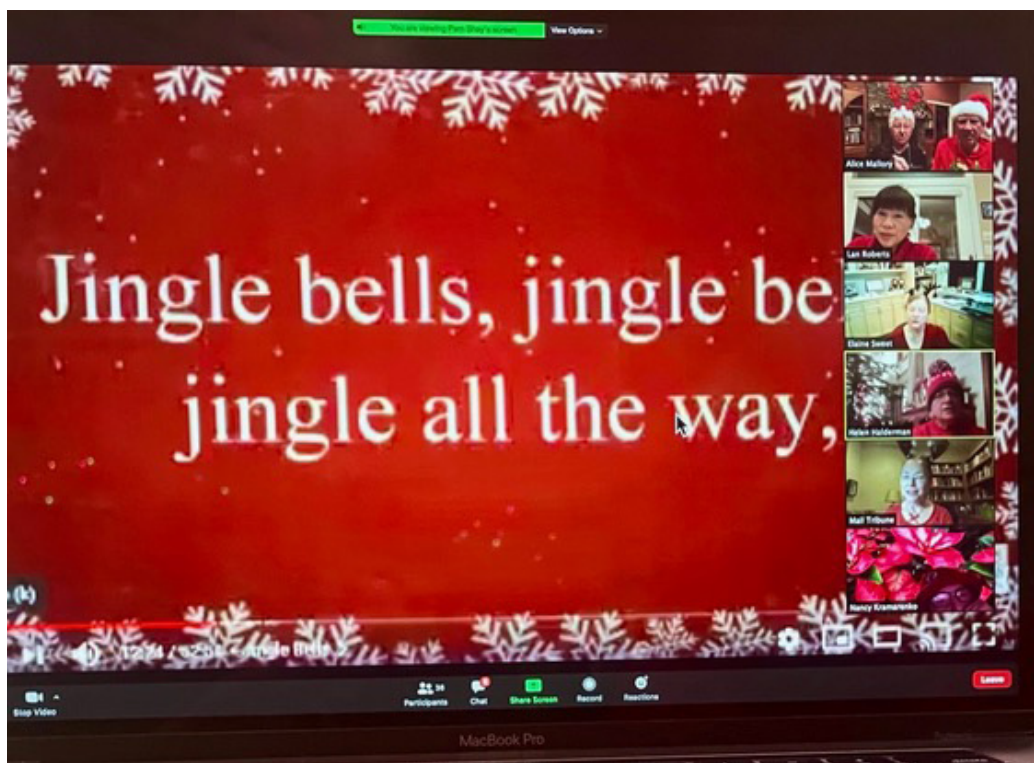
Holiday Party

On Friday, December 11, 2020 almost 50 Branch members attended a jolly holiday Zoom party. It was a spirited event organized by the team of Pam Shay, Paula Wiiken and Catherine Lutes. The highlights included singing carols, chatting with friends about holiday memories, and sharing best hopes for the coming new year.

To begin, each member brought along a favorite beverage and raised a glass in honor of the wonderful women of the Ashland Branch. Then "Zoom attendees" turned their attention to honored guest Diana Quirk, an active AAUW member for many years. Diana is completing her term as Dues Treasurer and is in the process of moving to Ohio to be closer to family. Diana was honored with gifts and will be greatly missed.

Rounding out the evening was a competition for the best and finest holiday attire. Admittedly, most members looked spectacular, whether appearing in a decorated sweater or a fancy hat. There were a few glamorous stand-outs that even Santa would have acknowledged. So, gift certificates were awarded to the following members: Sylvie Whitman for Best Holiday Head Decoration; the mother-daughter team of Shannon Stuver and Susan Schaefer for Best Holiday Costume, and Rae Otto for Best Holiday Jewelry.

The Holiday Party of 2020 will be remembered as "the Zoom party of the quarantine" but it will also hold a special place in Branch members' hearts as the warm, fun and uplifting celebration that reminded all of the friendship AAUW Ashland women share.



Ashland Vision

*is a monthly newsletter of the
Ashland, Oregon, Branch of AAUW*

**Vol. 35, No. 5
February 2021**

Co-presidents: Paula Wiiken
& Catherine Lutes

Financial Officer: Sonja Friedman

Recording Secretary: Peggy Audibert

Membership Chair: Claudette Paige

Public Policy Chair: Rotating

Contact Secretary: Linda Moreland

Newsletter Team

Editors: Ellen Fowler, Pat Brewer,
& Elaine Sweet

Designer: Chris Licata

Photographers: Members at large.

(Photos taken by members at branch meetings, interest group or other activities are welcome. Please submit photos for consideration to one of the newsletter editors.)

Readers: Alice Mallory, Rae Otto,
Sylvie Whitman,
& Catherine Greenspan

Newsletter deadline is the
15th of the month.

AAUW Ashland Website:
<http://ashland-or.aauw.net>

AAUW Ashland Facebook Page:
www.facebook.com/ashland.aauw/

In principle and in practice, AAUW values and seeks a diverse membership. There shall be no barriers to full participation in this organization on the basis of gender, race, creed, age, sexual orientation, national origin, disability or class.