

ASHLAND VISION

APRIL 2020

BREAKING THROUGH BARRIERS

THE MONTHLY NEWSLETTER OF THE ASHLAND, OREGON BRANCH



STAY AT HOME
AND FIGHT CORONAVIRUS

In This Issue

President's Message	2
Membership News	2
Coronavirus Prevention	2
Scholarship News	3
Top Five Facts about AAUW Scholarships	3
In Her Own Words	3-4
Writing Your Scholarship Checks	5
Thanks to Scholarship Committee	5
Endowment Update – Lang Match Challenge	5
Board Notes	6
Nominating Committee Report	6
AAUW National - Better for Women and Girls in 2019	6
Public Policy - Lobby Day Report	7
Primary Elections - May 19	7
Interest Groups	8

Looking Ahead

Celebration of Scholars	May 20
Annual Board Retreat	June 6

April Branch Meeting Cancelled

Regretfully, we are cancelling the April Branch Meeting originally scheduled for April 25th. This is traditionally our Presidents' Meeting. Pam and I were planning some fun events: the presentation of the Florence Schneider award, the announcement of our Named Gift Honorees, and breakout sessions to discuss issues important to us as AAUW members. We are postponing the awards until our September welcome back meeting. Hopefully, we will have weathered the Covid-19 crisis by then and have even more reason to celebrate. I wish you all a smooth transition to sheltering in place, good health, and creative ways to interact with your friends and loved ones.

And now for some good news! As you may know, our Branch is participating in the National AAUW Five Star Program which rewards branches for aligning their work with the AAUW Strategic Plan and other initiatives that foster our mission of advancing gender equity for women and girls. I'm delighted to announce that our Branch has received our first star for our efforts in Public Policy & Research! Congratulations to our outstanding Public Policy team and all those who helped us earn this recognition.

Please watch for all-member emails and check our website at ashland-or.aauw.net to stay abreast of new developments

—Paula Wiiken, Co-president AAUW Ashland

Calendar: 2019–20

April 25, 2020

SAT., 10:30 am - 12 pm
Branch Meeting
Asante Community Hospital
Stevenson Union, SOU

EVENT CANCELLED

May 20, 2020

WED., 6 - 8:30 pm
Celebration of Scholars
Rogue River Room,
Stevenson Union, SOU

June 6, 2020

SAT., 10 am - 2 pm
Annual Board Retreat
Location TBD



GO OUTSIDE
AND GET FRESH AIR

Save the date for the Celebration of Scholars

The Celebration of Scholars is a unique and joyful gathering to honor a group of special women. Please put the Celebration of Scholars on your calendar now. As with any big event, we'll need your help with greeting, finger foods, clean-up, and other tasks. Some of you will be asked to mentor the scholarship winners and help to introduce them. Please say yes when you're asked. If you would like to volunteer, contact Sunny Anderson.

—Sunny Anderson, Carol Mockridge
Co-chairs

When: Wednesday, May 20, 2020
6 - 8:30 p.m.

Where: SOU Stevenson Union
Rogue River Room

Mission

To advance gender equity for women and girls through research, education, and advocacy.

Vision

Equity for all.

Values

Nonpartisan. Fact-based.
Integrity. Inclusion and
Intersectionality.

PRESIDENT'S MESSAGE



Dear Members,

Me, Myself and I! The three of us are the only ones who can gather safely together in this isolating time of stopping the spread of Covid-19.

The restrictions placed upon us by the advent of the virus make it challenging--- if not impossible--- to tend to all the wonderful things we enjoy as an AAUW Branch: interest groups, celebrations, Branch board and committee meetings. These interactions will have to be postponed or cancelled or rescheduled or altered because our priority is to keep one another safe.

Although we will mourn the loss of our gatherings--- the socialization and the friendship--- there may be some things we learn about our connections. Our care for one another may deepen. We may discover other ways to communicate meaningfully. Some examples to consider: sending written notes to friends or giving them a call; sending a fun group text to your interest group; introducing yourself to a new communication tool like FaceTime, Zoom, Facebook, or Moodle and sharing it with your friends.

Be assured that your Branch leadership team will bring you as much information as possible. One good source will be this very newsletter. Stay in touch. Check out our website, ashland-or.aauw.net for meeting updates, look for all-member emails and check our Facebook page. Our Communication Team of Ellen Fowler, Pat Brewer, Alice Mallory, Chris Licata and their friends will work hard to keep us in close touch.

Something to consider: "Difficult times are like a washing machine---they twist us, spin us and knock us around but in the end, we come out cleaner, brighter and better than before."

May we all be well. May we all be safe. And may we all be "better than before" come summer.

Sincerely,
—Pam Shay

MEMBERSHIP NEWS

Greetings from Membership in quarantine! Since our April meeting has been cancelled, we are going to ask you to renew your membership this year by going to our website, <https://ashland-or.aauw.net/join/>, print out the membership renewal form, complete the form (including the volunteer questionnaire), and mail it with your check to the address in the upper right corner. This new process will really help us to get our membership renewal process underway despite the uncertainty about future meetings. Remember, the renewal deadline to be included in the directory is June 30, 2020.

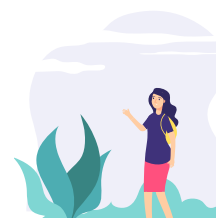
Please feel free to e-mail me if you have any concerns or questions about this. Thank you for your cooperation and flexibility.

Stay well, and remember to wash your hands!

—Catherine Lutes, Membership Chair



STAY AT HOME
AND CHAT WITH FRIENDS



GO OUTSIDE
AND ENJOY SPRING

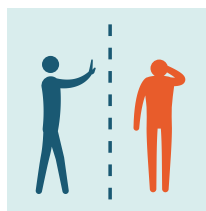


CORONAVIRUS 2019-nCoV

PREVENTION



WASH HANDS WITH WATER AND SOAP/SANITIZER, AT LEAST 20 SECONDS



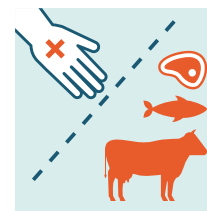
AVOID CONTACT WITH SICK PEOPLE



DON'T TOUCH EYES, NOSE OR MOUTH WITH UNWASHED HANDS



DON'T EAT RAW FOOD, THOROUGHLY COOK MEAT AND EGGS

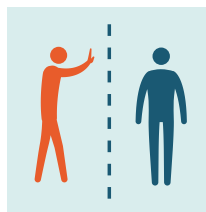


AVOID CONTACT WITH ANIMALS AND ANIMAL PRODUCTS

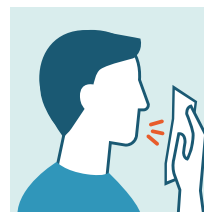
IF YOU ARE INFECTED



STAY AT HOME



AVOID CONTACT WITH OTHERS



COVER YOUR NOSE AND MOUTH WITH TISSUE OR ELBOW WHEN SNEEZING



KEEP OBJECTS AND SURFACES CLEAN



WEAR A SURGICAL MASK

Women: Environmental Education and Science Counts!

April 2020 marks the 50th anniversary of Earth Day and environmental stewardship. Yet the coronavirus Covid-19 outbreak demands an ongoing focus. This crisis demonstrates an urgent need of science education for all citizens to understand basic facts and to fully engage knowledgeably in public policy.

AAUW Ashland scholarship awards help women students to study in science and research, fields where women are still underrepresented. Our scholarships financially support students so they can participate in internships, research projects, and other challenging educational opportunities.

Jahna Thompson, RCC student, plans to transfer and continue her studies at SOU. She says, "I would not have been able to be as successful in my schooling this year without the AAUW Ashland scholarship. It has allowed me to cut down on my hours at work and really focus time on my education to keep my 4.0 GPA. I am so grateful for and proud of this achievement."

Turtle McCloskey, SOU undergraduate, shares her story about participating in scientific research at Harvard Forest Ecological Research site and how the AAUW Ashland scholarship award empowered her. She presented her research at the Oregon Academy of Science 2020 Annual meeting in Portland, Oregon. Turtle was able to network with peers and professionals while sharing knowledge and strengthening the scientific community of the Pacific Northwest. She has been accepted into the SOU Ronald E. McNair Post-Baccalaureate Achievement Program that will help her to prepare, apply to and complete a research-intensive doctoral program.

Invest in our community and support our next cohort of women scholars when you give to AAUW Ashland scholarship funds at SOU and RCC.

—Kate Wolf-Pizor and Wanda Chin,
AAUW Ashland
Scholarship Co-Chairs



In Her Own Words: The More I Learn

Jahna Thompson

RCC - Criminal Justice, and General Studies with focuses in both Biological Studies and Chemistry.

I am finishing up my associate degree in criminology and associate of general studies with a focus in biological studies at RCC, and will pursue my bachelors at SOU. My chemistry professor has inspired me to add chemistry as a third focus. I even shared a class with Valerie Miller, a 2019-20 recipient of the AAUW Ashland scholarship!

I've been working on a chemistry research project about methane emissions from beneath arctic glacial ice. It has opened my eyes to how much passion I had in regards to studying our changing climate and all of the factors that are contributing to it. My chemistry class does a big Earth Day presentation outside of the school and I plan on expanding this research and presenting again.

My main interests now are in climate change, wildlife rehabilitation and conservation with career possibilities in forensics or as a field biologist. Even if I do not work in an area specific to police/ criminal work, my studies and understanding of environmental laws are beneficial.

I just heard back from a volunteer program in Australia. I'm really excited to go work with wildlife rehabilitation for a month during August 2020. I'll be working with injured and displaced wildlife and helping with any environmental cleanups from the forest fire damage.

My advice to other students: Learn EVERYTHING you can, while you can. If you're interested in two different topics: take courses in both or even double major. Even if you don't end up using one of them in your ultimate career, that knowledge and experience will stay with you for life.

Ask questions and maintain relationships with your instructors: they want to help and see you succeed. I am excited to put everything I've been learning towards my career. There is so much opportunity to grow with many different directions I can go with an extensive understanding of life, physical and social sciences.

The more I learn, the more I feel like I may actually be able to make a difference, whether it's big or small. I can't wait to find out!



Jahna Thompson studies marine life during a Biology class led by RCC Professor Kevin Culhane, Crescent City.

TOP 5 Fast Facts About AAUW Ashland Scholarships

- 1 YOU** – our AAUW Ashland **members** fund our scholarships! Together strong we work to enable our sisters to get an education and make a difference to their own lives, family, and community!
- 2 AAUW Ashland awards scholarships** to women at SOU and RCC, from diverse majors and pre-professional programs, at community college, undergraduate and graduate levels.
- 3 Our partners** are Southern Oregon University Foundation (SOU) and Rogue Community College Foundation (RCC.) With the help of each financial aid office, applicants are matched with funds for which they qualify. Each quarter the accounting office applies one third of the scholarship award to the student's account to cover any university expense (i.e. tuition, on-campus housing, fees, and books); no checks are issued directly to students. No interest or earnings are accrued on these funds.
- 4 Our AAUW Ashland Scholarship Committee** reviews the applications, interviews the finalist candidates, and selects scholars to receive our scholarship awards.
- 5 Annual Funds and Endowment Funds** are available at both partner schools! Endowment Funds are investments where the principal remains intact; and earnings can be allocated to scholarships.

In Her Own Words: Cores of the Earth Story

Turtle McCloskey

SOU Honors College - Major in Environmental Science, minor in Spanish and Indigenous Studies.

During summer 2019 I was fortunate to spend 11 weeks at the Harvard Forest Ecological Research site, working with educators, scientists, and peers to understand and support the natural world around us.

At this undergraduate research program, several concurrent, large-scale research projects were conducted. Each undergraduate was able to design and conduct their own research as part of a larger project. I worked on the project team titled "Reconstructing landscape change in New England from lake sediments: interaction of humans, vegetation, climate change, and extreme weather."

Our team collected sediment cores from a variety of post-glacial lakes in the New England region. We utilized a variety of analysis methods to try to quantify landscape responses to anthropogenic disturbances and climate change. Under this broad umbrella I needed to design a small-scale, focused research project that I could complete in eleven weeks.

I came to the Harvard Forest feeling empowered in my ability to speak my truth, to critically analyze the world, and to dedicate myself to the pursuit of social justice and positive social change.

This was largely related to the fact that only weeks before, I was warmly welcomed into a community of strong, inspiring women who dedicate themselves to creating positive change in the world. These wonderful women of the AAUW community believed in me so much, that they chose to support me in my academic and career aspirations. This support empowered me to conduct my summer research beyond the narrow confines of ecology.

Because of the silent strength bestowed upon me by this organization, I thought more critically and deeply about the colonial vestiges existing within my education in environmental science. I decided to center my research around a dialogue addressing the ways we can observe lasting impacts of settler colonialism in New England, a region that seems to deny the existence of Indigenous Peoples altogether. In my analysis of sediment cores, I examined how disturbances to the land caused by Euro-American settlement and the associated forced displacement of Indigenous Peoples could be observed through sediment core chronology.

Through this experience I learned a plethora of valuable skills: specific data collection methods related to sediment core analysis; how to write scripts in R (an open-source data analysis software program) to repre-

sent my data in beautiful figures; to analyze changes in land use using historical aerial photographs graphic information systems software; how to write research proposals, and more.

Beyond these invaluable skills, I have become more confident, knowing that I can delve more deeply into my academic work. I returned to my studies at Southern Oregon University this fall feeling present, centered, determined.

I feel clear as I engage with curriculum and look toward my future role supporting others to make changes that protect and restore our natural resources. I also feel less of a financial burden which allows me to immerse myself in my studies more fully. Historically, the stress of working three jobs as a full-time student has made it difficult to do this. I had not even imagined what it might feel like to devote more time to the content of my coursework, but with the generous support from the AAUW scholarship, I have spent fall term taking a stronger hold on my education and my future.



Photo by John Tanner Horst

Left to right: Turtle McCloskey, Sarah Jonathan, and Tania Figueroa-Colón collecting a sediment core from Sandy Pond, New Hampshire.



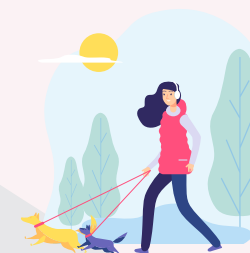
Photo by Robert Strahan

Undergraduate Environmental Science and Policy majors at the Collins Demonstration Forest near Gold Hill, OR. Left to right: Tule O'Rourke, Makayla Hoyt, Stuart Prince, Turtle McCloskey, Daranda Hinkey.

Under the supervision of Dr. Robert Strahan, SOU Biology and Environmental Science, we are quantifying the historic forest structure and current forest structure of the Collins Demonstration Forest to inform a restoration prescription for the Forest with the goal of wildfire prevention.



STAY AT HOME
AND LEARN ONLINE



GO OUTSIDE
AND TAKE A WALK

Writing Your Scholarship Checks

Where do you want your money to go?

You could be writing one, two, three, or four checks depending on your answer to that question.

First question is easy: SOU or RCC? If both, then you will be writing at least two checks, one to SOU Foundation and one to RCC Foundation.

Second, do you want students this year to receive your donation (Annual), or do you want to put your donation into the Endowment fund for use for future students? Or do you want to do both?

- If you want to help students this year, then write “AAUW Annual” in the Memo line of your check.
- If you want your donation to be placed in the endowment fund to help future students, then write “AAUW Endowment” in the Memo line of your check.
- If you want to do both, then write one check with “AAUW Annual” in the Memo line and another check with “AAUW Endowment” in the Memo line.

So you can see how you might be writing 4 checks:

- SOU Foundation, with AAUW Annual in the Memo line
- SOU Foundation, with AAUW Endowment in the Memo line
- RCC Foundation, with AAUW Annual in the Memo line
- RCC Foundation, with AAUW Endowment in the Memo line

Whew! We know this is complicated, but we want your contribution to go where you intend. Diana Quirk is happy to answer questions on check writing—please call her if this is not clear: 541-488-8328.



Thanks to the AAUW Scholarship Committee

Priscilla Arnold, Anne Cowden, Erin Finklea, Carole Florian, Lynda Gutierrez, Suzanne Hering, Margaret Humphrey, Katharine Lang, Ann Lovett, Peggy Moore, Elaine Sweet, Sunny Anderson, Kate Wolf-Pizor and Wanda Chin, Co-Chair

Endowment Update



Our Lang Match Challenge is in full swing! Donations to both SOU and RCC endowment funds are coming in.

The following donors have recently given gifts of \$500 or more to the campaign:

- Elaine Sweet, AAUW Branch Member, gave \$6,746
- Cathy Kemper-Pelle, RCC President, gave \$1000
- Judy Basker, Exec Dir RCC Foundation gave \$1000



Cathy Kemper-Pelle
RCC President:

“As a regular attendee of the Ashland AAUW Scholarship Awards reception, I am moved by the impact this organization has creating economic mobility for underserved students in our region. These scholarships are changing students’ lives by supporting their college education and creating ripples of positive impact in our community. I am pleased to add to the Lang match.”



Judy Basker
Executive Director, RCC Foundation:

“I have long admired the quality of programs and activities of the Ashland AAUW. In particular, your support for scholarships for students is impressive.

It is my distinct honor to add to the Lang Match for the AAUW Endowed Scholarship Fund at RCC. Thank you to the Ashland AAUW, and to Ron & Katharine Lang.”

Remember that every gift made to SOU and RCC endowment funds during this two-year campaign will be matched, doubling its impact. Please consider giving in any amount and know that your gift to the endowment funds will continue in perpetuity.

Thank You
—Endowment Committee



February 17, 2020

FINANCIAL REPORT

Sonja Friedman reported: Income \$6,835.00; Expense \$2,038.44; Special Project balances to include WIN, NCCSWL, Helping Hands, and Maslow \$956.91; Total Bank Balance \$36,973.37

GIFT HONOREES

Bessie Azari reported that \$6,140 was donated to AAUW National by the Board and 29 Branch members which enables AAUW Ashland to name six Gift Honorees for outstanding contributions during 2019.

WiN

Carol Ryan has resigned as WiN chair and no replacement has yet been found. The committee will be reformed at a later date

STATE CONVENTION

Paula Wiiken reported that 40 persons statewide have registered for Lobby Day, February 24. The event theme is "Getting and Staying Elected." (See report on page 7.)

DONATION TO AAUW NATIONAL

Bessie Azari proposed that that the Board consider making a donation to the AAUW National Greatest Needs Fund on behalf of the Branch. She explained that AAUW National has experienced some financial challenges in recent years and the Greatest Needs Fund can give our national organization more flexibility in its use of funds. She also noted that many of National's endowment funds are fully funded and do not need further donations to continue their work. Bessie proposed that our Branch could do more to help our parent organization. After a discussion, including a review of the Branch's financial position, the Board approved making a \$5,000 donation to the AAUW National Greatest Needs Fund. (See article in right-hand column.)

Nominating Committee Report

The Nominating Committee is pleased to announce the slate of positions for AAUW Ashland 2020-2021. We are unable to conduct elections in person at our cancelled April meeting, but will communicate with you soon about how we plan to vote.

Co-Presidents: Paula Wiiken and Catherine Lutes

Financial Officer: Sonja Friedman

Dues Treasurer: Diana Quirk

Recording Secretary: Peggy Audibert

Parliamentarian: Sandra Coyner

Members at Large: Sylvie Whitman and Gail Engblom

Two important positions remain vacant. We are actively seeking a Membership Chair and a chair for WiN.

1. The Membership position is a crucially important job for our Branch. For details, we urge you to ask Pam Shay, Catherine Lutes, or Paula Wiiken about the job. We would love to announce you as new Membership Chair at a future meeting.
2. We also would like to find a new chair for Women in Need (WiN). Carol Ryan has ably filled this job but is unable to continue. She could answer any questions you might have.

Please consider offering your time to keep our Branch the special organization it is. With thanks, the Nominating Committee

National AAUW Made the World Better for Women and Girls in 2019

Ashland Branch's AAUW Funds are donations made to the National Greatest Needs Fund by our Branch or individual members.

During the calendar year, we contributed \$6,140, and therefore we qualify to name six Gift Honorees, members who have made an outstanding contribution to programs and projects in 2019. Last year, we qualified for two Named Gift Honorees because we donated \$1,000 – 2,000. Honorees will be recognized at our September Branch meeting.

Prior to a reorganization of National AAUW in 2017 when Kim Churches became CEO, AAUW was spending more money than it was raising and had deplet-

ed its savings. The budget was slashed and the staff reduced from 107 to 40 employees. Membership has dropped since 2016 from 94,273 to 72,011.

We are an esteemed, robust membership-based equity organization. We are research-based, non-partisan advocates for women and girls. AAUW gave \$170,000 in grants and fellowships internationally. Regardless of the belt-tightening, our impact is great. National is bringing in new audiences, new donation-based co-partners, and supporters. We are now on national platforms, including NPR, NBC news, USA Today, Oprah Magazine, BBC, Washington Post, and Newsweek.

Here a few ways AAUW made the world better for women in 2019:

- Thanks to a \$500,000 grant from the Coca-Cola Foundation, we trained 102,000 women in salary negotiation skills through Work Smart and Start Smart programs. The grant has been renewed.
- The Coca-Cola Foundation also enabled us to implement Empower, a new leadership and networking program we will bring to women and girls.
- AAUW led the effort to pass the Paycheck Fairness Act in the House. Our advocates testified on the ERA, LGBTQ anti-discrimination protections, and on paid family leave.
- We helped 11 states pass equity legislation in 2019. Nearly every state now has some form of equal pay legislation in place.

We have laws and values in place, but home, school, and workplace still display old

paradigms from the '40's, '50's and '60's. We still need flexible scheduling, childcare, and employment practices that include applications that omit work history questions and allow employees to discuss salary.

As we commemorate the 100th anniversary of the 19th Amendment and the 55th anniversary of the Voting Rights Act, our Board, on behalf of our Branch, approved a motion to donate \$5,000 to the Greatest Needs Fund to support the mission and the strategic plan of National AAUW.

Members can make donations on the National AAUW website or by contacting Bessie Azari, AAUW Funds Chair.

—Bessie Azari, AAUW Funds Chair

AAUW and Lobbyists Come Together

On February 24, forty-three AAUW members arrived in Salem to lobby their legislators during AAUW of Oregon Lobby Day.

Walking the halls of the capitol building in Salem was humbling. The marble walls and floors gleam and reflect against the murals in the multi-story rotunda. During a tour we learned the history of the building and about the people who have served Oregonians since 1859 when Oregon became a state. The current capitol building is the third, having lost the first two wood buildings to fires.

The Southern District was well represented by 16 members including ten Ashland members: Regina Ayars, Bessie Azari, Ann Bard, Julie Benezet, Kathy Brandon, Toni Dockter, Ellen Fowler, Sonja Friedman, Lesley Kaufman, Pam Shay, and Paula Wiiken. Also included were four women from Grants Pass and two from Medford.

The AAUW members heard from key legislators, Senator Kathleen Taylor (Chair of Senate Labor & Business Committee) and Representative Cheri Helt (Vice Chair of House Committee on Education), on legislation moving through the Senate and House during this short session.

We also heard from well-known lobbyists, Barbara Ross and Dave Hunt (both former legislators), and Amanda Hess (government relations consultant).



Barbara Ross, former legislator and tireless activist for over 60 years! An inspiration to us all.



Rep. Cheri Helt (R., Dist. 54, Bend, Vice Chair of House Committee on Education).



Trish Garner, AAUW Oregon Public Policy Chair, Vice Chair of the House Committee on Education.



Sen. Kathleen Taylor (D., Dist. 21, Milwaukie), spoke about what inspired her to run for office and the issues that keep her motivated. She's Chair of the Senate Labor and Business Committee.



Patricia Garner (Chair of AAUW of OR Public Policy Committee) reviewed the top three bill priorities for AAUW:

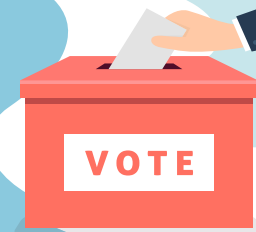
1. HB 4076 establishes a taskforce on Age Discrimination,
2. HB 4131 provides funding for the Family Preservation Project at Coffee Creek Correctional Facility, and
3. HB 4132 requires Oregon Health Authority and the Oregon Department of Education to administer and collect data from student health surveys.

Attendees then met with their legislators advocating for these bills asking legislators to support the passage of the legislation. Unfortunately, Lobby Day was the day that the Republican legislators walked out, thus bringing the short session to a sudden and premature halt.

If you want to meet fellow civically-engaged AAUW women, join us next year. I guarantee that you will learn something new about how your state government works and how your legislators work for you.

—Regina Ayars
Chair, Public Policy
Ashland Branch

Primary Election May 19



Are you registered to VOTE? **The deadline to register is April 28.** If you aren't—or if you are not sure—go to <https://jacksoncountyor.org/clerk/Elections/Voter-Registration>

Voter Pamphlets will be mailed April 22–24, ballots will be mailed May 1, and the Primary Election is Tuesday, May 19. There's lots to vote on beside the presidential candidate: U.S. Representative, Oregon Secretary of State, Attorney General, County Commissioners, Assessor, plus ballot measures:

- Amend the Ashland City Charter to create a City Manager position?
- New Jail: Form a District to construct and operate a local correctional facility?

For more info on these two ballot measures, go to: <https://jacksoncountyor.org/clerk/Elections/Upcoming-Current-Elections/General-Primary-Elections>

Charitable Partners

These two members have pledged to make a donation to either the AAUW/SOU or AAUW/RCC Scholarship Fund every time an AAUW member uses their services or refers someone who uses their services. We thank them for their generosity and dedication to AAUW.

Liz Murphy, CFP MBA/Financial Advisor
Raymond James Financial Services
541-779-9907
Liz.Murphy@RaymondJames.com
raymondjames.com/lizmurphy

Sara Walker, Broker
Patricia Sprague Real Estate
541-951-5454
sara@hatsoff2u.com | hatsoff2u.com

INTEREST GROUPS

In light of the limitation on most group gatherings due to the corona virus COVID-19 situation, unless otherwise specified below, these groups will NOT meet during the month of April. We hope we'll have better news in the May newsletter!

Contact the coordinator to join any group or for information about meetings. Their contact information is in the membership directory, which is also available on our website <https://ashland-or.aauw.net/membersdirectory/>

Arts and Language

AFTERNOON MOVIE GROUP meets on the 3rd Tuesday of each month to watch a movie at the Varsity or Ashland Street Cinemas. We meet in the lobby 10 minutes before the selected movie begins. If you wish, we can discuss the movie at a local hotspot afterward. The selected movie and the time are announced by email. This group will not meet in April. *Coordinator: Jean Conger*

MUSICALS meets the 3rd Monday of the month at 4:30 pm, usually at the home of Ed Perkins. Look for a group e-mail. *Coordinator: Diane Novak*

OPERA meets the first Tuesday of each month at 4 pm at the home of Ed Perkins. *Coordinator: Nancy Kramarenko*

PLAY READING meets the fourth Friday of each month at Annette Lewis's home. *Coordinator: Annette Lewis*

SHAKESPEARE AT OSF meets the 2nd and 4th Wednesdays from 12:30 to 3 pm at Barbara Willson's home. We read aloud those plays being performed at the Oregon Shakespeare Festival, and share interesting information regarding both the subject being read and the writing itself. *Coordinators: Michaelae Rae and Peggy Audibert*

Book Groups

BRAIN BOOKS usually meets on the 4th Tuesday from 1:30-3:30 pm at the Ashland Public Library Guanajuato Room. *Coordinator: Sandra Coyner*

DAY NONFICTION We meet on the 1st Wednesday at 1 pm. *Coordinator: Linda Lipkind*

DAYTIME FICTION meets on the 3rd Wednesday of each month in members' homes. Currently we are not accepting new members due to the size of the group. For information, please call *Coordinator, Colleen Patrick-Riley.*

EVENING NONFICTION meets on the 3rd Wednesday of each month at 7 pm. *Coordinator: Ellen Fowler*

MONDAY EVENING BOOKS usually meets on the first Monday at 7 pm. *Coordinator: Shannon Stuver*

THURSDAY EVENING MYSTERY meets on the 2nd Thursday of each month at 7 pm. We're hoping to meet on April 10 at Chris Donchin's home. We're reading "The Lighthouse" by P.D. James. All are welcome but please check first in these uncertain times. *Coordinator: Phyllis Fernlund*



**STAY AT HOME
AND ENJOY GARDENING**

Games, Genealogy, Knitting & Dining

BOARD GAMES will not meet in April. *Coordinator: Sylvie Whitman*

GENEALOGY GROUP We meet at 1:30-3:30 pm on the 4th Thursday at the Jackson County Genealogy Library, 3405 S. Pacific Hwy., Medford. Any AAUW Ashland member interested in genealogy is invited to join us in sharing family histories, stories, photos, and research tips. Beginners and experienced family researchers are equally welcome. *Coordinator: Linda Lipkin*

KNITTERS AND STITCHERS We meet on the 2nd Thursday of each month from 1-3 pm at the home of a member, where we work on hand projects and talk about the news of the day. If you would like more information, or to join our group, please contact *Coordinator, Peggy Audibert*

POTLUCK DINNERS gets together 4-6 times a year for casual dinners. *Coordinator: Elaine Sweet*



**GO OUTSIDE
AND GET SOME SUN**

Ashland Vision

is a monthly newsletter of the Ashland, Oregon, Branch of AAUW

Vol. 34, No. 7 — April 2020

Co-presidents:
Pam Shay and Paula Wiiken

Financial Officer:
Sonja Friedman

Recording Secretary:
Peggy Audibert

Membership Chair:
Catherine Lutes

Public Policy Chair:
Rotating

Contact Secretary:
Linda Moreland

Newsletter Team

Editors:
*Ellen Fowler, Pat Brewer,
and Elaine Sweet*

Designer:
Chris Licata

Photographers:
Members at large.
(Photos taken by members of branch meetings or interest group activities are welcome. Please submit photos for consideration to one of the newsletter editors.)

Readers:
*Alice Mallory, Rae Otto,
and Sylvie Whitman*
Newsletter deadline is the 15th of the month.

AAUW Ashland Website:
<http://ashland-or.aauw.net>

In principle and in practice, AAUW values and seeks a diverse membership. There shall be no barriers to full participation in this organization on the basis of gender, race, creed, age, sexual orientation, national origin, disability or class.